



• SEISMIC & FRAGILITY TESTED
• Q/A AVAILABLE AT EXTRA COST



“THE MCCABE LINK”® MODELS E5720H, E5730H & E5734H

ELECTRIC THERMAL “S” HOOK RESET
(FIRE HEAT CLOSURE -- THE REAL FAIL SAFE NEED)



Underwriters Laboratories Listed Fire Alarm Equipment S24505

Bi-Metal Link meets all requirements under Underwriters Laboratories Standard No. 33

Also meets new Underwriters Laboratories cycle testing requirements for Resettable Link
Basic Links Franklin Institute & Wyle Labs Seismic & Fragility Tested

FUSIBLE LINK NOT NEEDED

FEATURES

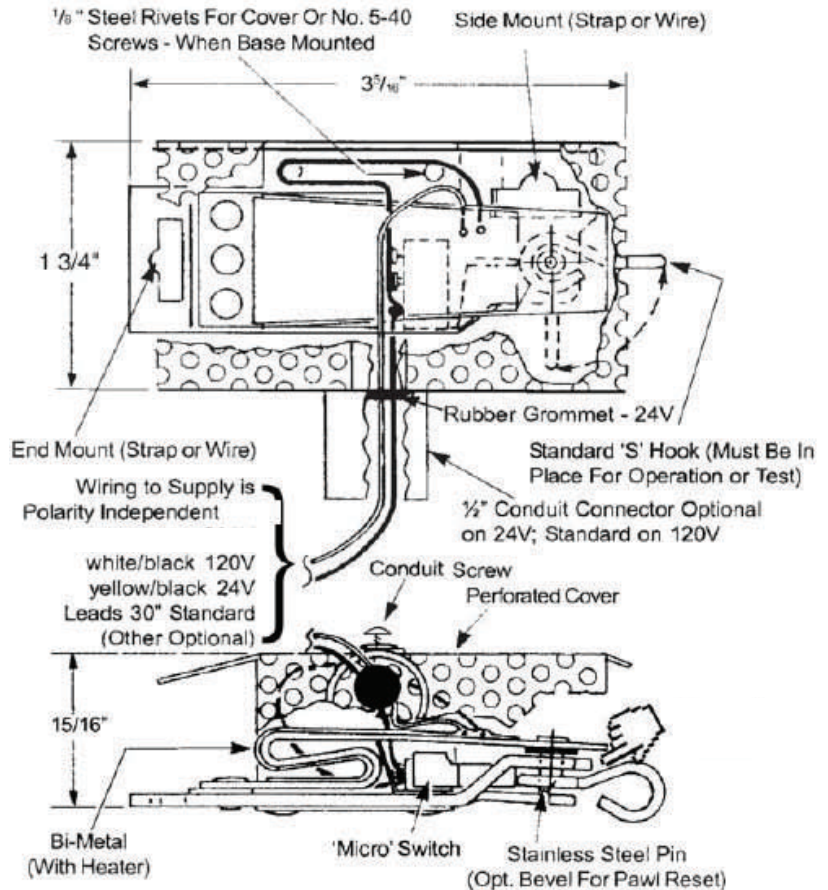
- Permanent-Resettable repeatedly after testing including routine systems cycle testing for safe functioning operating tests with inspection.
- Can be operated (repeatedly) two ways: Heat or Electrically.
- Nuisance tripping reduced by delayed operation (15-45 seconds Std. 1 Min. is UL Std. Max.).
- Self protection link circuitry—link is ‘off’ when ‘S’ Hook is out—so do NOT test without ‘S’ hook engaged.
- Corrosion resistant stainless steel, plated or en-cased parts.
- Positive mechanical operation.
- In Direct Fire (Thermal) operation the Bi-Metal Link is three times faster acting than UL maximum standard for fusible links.
- Can be used on all types of Smoke Curtains & Vents, Doors, Smoke Hatches, Foam & Chemical Release Systems and other applications.

NOTES

- Pin releases standard ‘S’ hook on signal (Heat or Electric), and returns in ambient air automatically to the normal position for resetting.
- 115 or 24 Volt AC/DC (Specific voltage).
- Use Electric release for usual test operation or heat only until release.
- Indirect exposure to fast moving cold air time-to-operate may vary. Positioning or deflector will adjust.
- Loads to the Link must be held within UL 33 Fire Link Requirements. However, with the use of devices such as levers or positioning, or as UL tested for operations in specific apparatus; McCabe Links can be used to activate heavier loads. Release temperatures.
- Always consult pertinent standards and local building authorities for installation requirements.

RESETTABLE FIRE LINK

“ACTUAL FIRE OPERATES THE SAME LINK YOU TESTED”



Power required at 55 watts for less than 30 seconds

Volts	Amps
24V AC/DC	2.3
115V AC	.46

Model	Temperature	Load-End Mount	Load-Side Mount
E5720H	165° F	25 LBS. MAX.	5 LBS. MAX.
E5730H	212° F	25 LBS. MAX.	5 LBS. MAX.
E5734H UL Pending	285° F	25 LBS. MAX.	5 LBS. MAX.



Sheet No. E5720H

PHL LINKS, LLC
3916 Traxler Court
Bay City, Michigan 48706

Tel: 888-745-2335
Fax: 989-686-8152
E-mail: info@phlinc.com
www.phlinc.com